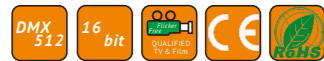
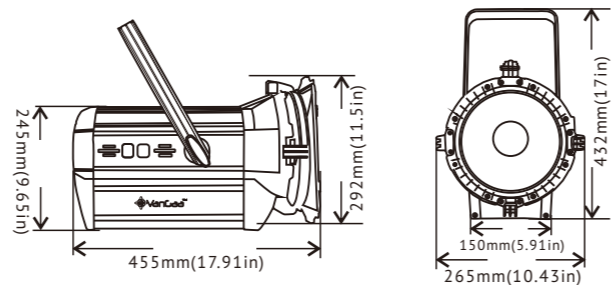


Manual Zoom LED Fresnel Spot Light

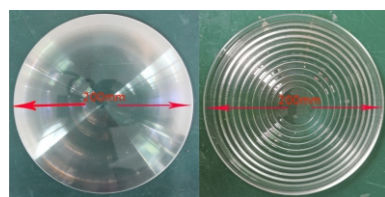
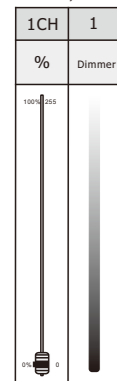


Specification	
Product model	VG-PB300W/VG-PB200W/VG-PB100W
Light sources	300W/200W/100W high CRI COB LED Lamp
Input power	AC100-240V, 50/60Hz
Power	300W/200W/100W
CRI	Ra≥95, or Ra≥97
Color temp.	3200K/5600K
Dimmer	0-100% Linear dimmer
Control panel	LCD display+4 buttons
DMX channel	1CH, 2CH
Beam angle	15-60degree, manual zoom
Cooling system	Copper tube convector+mute fan
Control mode	DMX512/Demo/Manual
IP rating	IP 20
Accessories	Barn doors, power cable, signal cable
Net weight	7.5kg
Body size	455*265*292mm

Product details



Manual zoom Style DMX Channel



different style fresnel lens optional



300W-5600K:	13812041748	10042	4485	2325
3200K:	62000 17500	4600	2120	1200
200W-5600K:	39800 9120	2540	1230	620
3200K:	32500 8885	2250	1002	545
100W-5600K:	24500 5915	1954	710	325
3200K:	22500 5885	1850	678	320

300W-5600K:	19325 4920	1167	539	292
3200K:	11100 2750	650	330	200
200W-5600K:	9915 2755	805	410	211
3200K:	8700 3510	760	350	190
100W-5600K:	5840 2002	560	325	109
3200K:	5679 1930	540	296	105

Features

- Equips 100W/200W/300W brand high CRI high brightness LED chips, different power optional;
- Use large copper tube radiator as the main parts of cooling system, and digital temperature sensor to control the noise of mute fan within 38-45db which suit the international studio room environment standard;
- Use screw to adjust the different beam angle from spot(15degree) to flood(60degree), there is the rotary know to adjust the angle at the back control panel easily;
- Compact structure, beautiful appearance, unique, the housing, software, PCB and other inner structure is independent research and development by vangaa lighting;
- High CRI 95Ra or 97Ra optional, flicker free; 0-100% linear dimmer smoothly.

Application



Effect



Manufacturing



Package

